



Our Certificate



MISSION
VISION

With continuous advices from panel of experts and feedback from doctors, we strive to update our products with best possible methods and equipment's needed. Also be a brand known for Service, Quality, Reliability and Consistency.

Our first vision is to become best market leaders as SERVICE provider and Second Vision is to not just become manufacturer, but become the best manufacturer in the market by providing best quality of equipments.

About Symax :

Symax Dental is the fastest growing organization in the realms of dental equipment's. We are one of the prominent Manufacturers and Exporters of host of products like Fully Electrical Dental Chairs, Dental Compressors, Dental X-ray Machine, Front Load Autoclave Class - "B" & "N", Dental Motorized Suction, UV Cabinet's, Airtor Handpieces & Micromotor Handpieces. We also manufacture Ophthalmic Chairs and Skin Check-up Chairs.

We have ISO 13485 : 2003 and CE Certificate for Medical Equipment's. Symax Dental is located at Ahmedabad, Gujarat. Under the leadership of our owner, Mr. Kalpesh Mevada, the company has carved its niche in the market. The following are some of the salient features of the company that set in apart in the market. adding new features to these products to enhance and upgrade these products. Moreover, we strive to manufacture products that satisfy consumer's end.

Infrastructure

We have a sound backing of state-of-the-art infrastructure. Our infrastructure, which is well equipped with all kinds of machines and equipment's, has enabled us towards incorporating cutting edge technology in the manufacturing of our high end products.

Quality Assurance

As our products are meant to be used in treatments of dental procedures, it becomes our responsibility to offer them with an assurance of quality and high standards. We have well advanced in house facility for quality testing of these products.

Workforce

the company has services offered by highly advanced trained team of dental professionals. The team also strives to manufacture products as per the international norms. In addition to this, our professionals also keep on adding new features to these products to enhance and upgrade these products. Moreover, we strive to manufacture products that satisfy consumer's end.



FEATURES :

- ◆ Microprocessor based multi-programmable dental chair unit with three erasable programs.
- ◆ Fix Programs Zero position, Syncope position, Gargle & Emergency stop.
- ◆ Under hanging Big instrument trolley with pneumatic locking system.
- ◆ Two airtor points, one micro-motor point, one 3 way syringe point.
- ◆ Stainless steel tray & LED x-ray film viewer programmable Spittoon & tumbler.
- ◆ Fine tuning control for micro motor only point.
- ◆ Halogen Dental light with imported glass reflector having two intensity.
- ◆ Moveable & removable glass cuspidor with smooth and easy to cleaning.
- ◆ Assistant side operating control panel & 3 way syringe point.
- ◆ Low vacuum 100w motorized suction with inbuilt auto drain system.
- ◆ High vacuum pneumatic suction with flow control valve.
- ◆ Multi-function foot control with additional foot operated Spittoon& Tumbler.
- ◆ PU molded adjustable & moveable armrest.
- ◆ Doctor stool with push back system.

OPTIONAL Attachment :

- ◆ Over hanging instrument trolley.
- ◆ Ultrasonic Scaler LED/Non-LED inbuilt.
- ◆ Micro motor 3500RPM inbuilt.
- ◆ LED light with multi-intensity control with horizontal & Vertical movement.
- ◆ OPG LED film Viewer.
- ◆ Automatic Sensor operated cup filler.
- ◆ TFT Monitor arm.
- ◆ High Power vacuum motorized suction 0.25hp inbuilt.
- ◆ Memory Form Seat. ◆ Black body. ◆ Left Side operated (lefty).

Technical Specification :

- ◆ **Power Supply** : AC220 ± 10% 50-60Hz
- ◆ **Input air pressure** : 0.55-0.6Mpa Flow rate>50L/min.
- ◆ **Input Water pressure** : 0.2-0.4 Mpa Flow rate>10L/min.
- ◆ **Work pressure** : 0.25Mpa/32psi.
- ◆ **Overall Dimensions** : 140cm L X 87cm W X 104cm H

LED LIGHT



OPG X-Ray Film Viewer



Sensor Tumbler



Key-pad



Assistant Control





FEATURES :

- ◆ Microprocessor based multi-programmable dental chair unit with three erasable programs.
- ◆ Fix Programs Zero position, Syncope position, Gargle & Emergency stop.
- ◆ Under hanging big instrument trolley with pneumatic locking system.
- ◆ Two airtor points, one micro-motor point, one 3 way syringe point.
- ◆ Stainless steel tray & LED x-ray film viewer programmable Spittoon & tumbler..
- ◆ Fine tuning control for micro motor only point.
- ◆ Helogen light with imported glass reflector having two intensity.
- ◆ Moveable & removable glass cuspidor with smooth and easy to cleaning.
- ◆ Low vacuum 100w motorized suction with inbuilt auto drain system.
- ◆ High vacuum pneumatic suction with flow control valve.
- ◆ Multi-function foot control.
- ◆ PU moulded adjustable & moveable armrest.
- ◆ Doctor stool with push back system.

Optional Attachment :

- ◆ Over hanging instrument trolley.
- ◆ Ultrasonic Scaler LED/Non-LED inbuilt.
- ◆ Micro motor 3500RPM inbuilt.
- ◆ LED light with multi-intensity control with horizontal & Vertical movement.
- ◆ OPG LED film Viewer.
- ◆ Automatic Sensor operated cup filler.
- ◆ TFT Monitor arm.
- ◆ High Power vacuum motorized suction 0.25hp inbuilt.
- ◆ Memory Form Seat. ◆ Moveable instrument trolley. ◆ Black body. ◆ Left Side operated (lefty).

Technical Specification :

- ◆ **Power Supply** : AC220 ± 10% 50-60Hz
- ◆ **Input air pressure** : 0.55-0.6Mpa Flow rate>50L/min.
- ◆ **Input Water pressure** : 0.2-0.4 Mpa Flow rate>10L/min.
- ◆ **Work pressure** : 0.25Mpa/32psi.
- ◆ **Overall dimensions** : 140cm L X 87cm W X 104cm H

LED LIGHT



OPG X-Ray Film Viewer



Sensor Tumbler



Trolley



Multi Programable Foot Control





- ♦ Fully electrically operated Zero Programmable dental Chair.
- ♦ Under hanging instrument trolley with pneumatic locking system.
- ♦ Two airtor points, one micro-motor point, one 3 way syringe point.
- ♦ Stainless steel tray & LED x-ray film viewer.
- ♦ Halogen light Switch operated with two step intensity control.
- ♦ Ceramic cuspidor with smooth and easy to cleaning.
- ♦ Low & High vacuum pneumatic suction with flow control valve.
- ♦ Multi-function foot control.
- ♦ Doctor stool with push back system.

OPTIONAL Attachment :

- ♦ Ultrasonic Scaler LED/Non-LED inbuilt.
- ♦ Micro motor 35000RPM inbuilt.
- ♦ LED light with multi-intensity control with horizontal & Vertical movement.
- ♦ OPG LED film Viewer.
- ♦ TFT Monitor arm.
- ♦ High Power vacuum motorized suction 0.25hp inbuilt.
- ♦ Memory Form Seat.

Technical Specification :

- ♦ **Power Supply** : AC220 ± 10% 50-60Hz
- ♦ **Input air pressure** : 0.55-0.6Mpa Flow rate>50L/min.
- ♦ **Input Water pressure** : 0.2-0.4 Mpa Flow rate>10L/min.
- ♦ **Work pressure** : 0.25Mpa/32psi.
- ♦ **Overall dimensions** : 140cm L X 87cm W X 104cm H

LED LIGHT



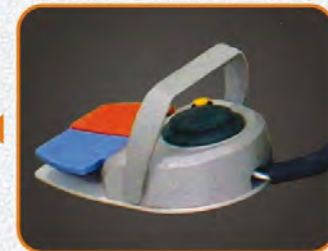
Trolley



Ceramic Cuspidor



Multi Programable Foot Control





FEATURES :

- ◆ Fully electrically operated Zero Programmable dental Chair.
- ◆ Dental Chair with solid metal frame-Structure with rust free powder coating.
- ◆ Lowest down position for comfort working position.
- ◆ Under hanging instrument trolley with two airtor points, one micro motor point , one 3way syringe point.
- ◆ Movable basin unit with Ceramic bowl.
- ◆ Auto water Connection for spittoon and tumbler.
- ◆ Stainless Steel tray & LED x-ray film viewer.
- ◆ Halogen light switch operated with two step intensity control.
- ◆ Low & High vacuum pneumatic suction with flow control valve.
- ◆ Multi-function foot control.
- ◆ Doctor stool with pushback system.

Optional Attachment :

- ◆ Ultrasonic scaler LED/Non LED inbuilt.
- ◆ Micromotor 35000 RPM inbuilt.
- ◆ LED light with multi-intensity control with horizontal & Vertical movement.
- ◆ OPG LED film Viewer.
- ◆ TFT Monitor arm.
- ◆ High Power vacuum motorized suction 0.25hp inbuilt.
- ◆ Memory Foam Seat.



FEATURES :

- ♦ Fully electrically operated Zero Programmable-dental Chair.
- ♦ Dental Chair with solid metal frame-Structure with rust free powder coating.
- ♦ Lowest down position for comfort working position.
- ♦ Under hanging instrument trolley with two airtor points, one micro motor point , one 3way syringe point.
- ♦ Movable basin unit with Ceramic bowl.
- ♦ Auto water Connection for spittoon and tumbler.
- ♦ Stainless Steel tray & LED x-ray film viewer.
- ♦ Halogen light switch operated with two step-intensity control.
- ♦ Low & High vacuum pneumatic suction with flow control valve.
- ♦ Multi-function foot control.
- ♦ Doctor stool with pushback system.

Optional Attachment :

- ♦ Ultrasonic scaler LED/Non LED inbuilt.
- ♦ Micromotor 35000 RPM inbuilt.
- ♦ LED light with multi-intensity control with horizontal & Vertical movement.
- ♦ OPG LED film Viewer.
- ♦ TFT Monitor arm.
- ♦ High Power vacuum motorized suction 0.25hp inbuilt.
- ♦ Memory Foam Seat.



OIL Free .75 HP

1.1 HP COMPRESSOR

OIL Free 1.5 HP

2.2 HP COMPRESSOR

NOISE Less Emerson
(Kirloskar)

Technical Specification :

POWER	550W 0.75hp	750W 1.1hp	550Wx2 (1.5 hp)	750Wx2 (2.2 hp)
NOISE	54dB	58dB	65dB	72dB
BAR	6-8	6-8	6-8	6-8
TANK CAPACITY	35 ltr.	35 ltr.	60 ltr.	60 ltr.
AIR FLOW	115 L/min.	145 L/min	-----	-----
NET WIGHT	26 kg.	28 kg.	38 kg.	45 kg.
VOLTAGE	220V/50Hz	220V/50Hz	220V/50Hz	220V/50Hz

X-RAY MACHINE



SCISSORS ARM



WALL MODEL

Technical Specification :

- ◆ Power Voltage : AC220 ± 10%
- ◆ Frequency : 50 HZ
- ◆ Electric Plug : Three-core (International/European standard)
- ◆ Rvg Compatibility : Yes (All The digital sensors in the market)
- ◆ Electric Current : 5A
- ◆ Focal Spot : 0.8MM x 0.8mm

- ◆ Rated High Voltage : 60/70, KV + 10 %
- ◆ Tube-head Current : 7mA + 15%
- ◆ Anode Angle : 190
- ◆ Focus To Skin Distance : 20 cm
- ◆ Exposure Time : 0.01s to 2.99s
- ◆ Filtration : 1.6Al



PORTABLE CHAIR

FEATURES :

- ◆ Dental chair should be light weight & Study.
- ◆ chair should have cushioned sheet & cable of withstanding weight up to 100 kg.
- ◆ Adjustable height.
- ◆ Adjustable Backrest tilts
- ◆ Spittoon attached / separated on the stand disposable pipe.
- ◆ strong padded case for safe transportation.
- ◆ control box Unit with attached airtor point, saliva ejector, 3way syringe, built in compressor.



PEDO CHAIR



FEATURES :

- ♦ Fully Electrically operated Zero Programmable dental Chair.
- ♦ Attractive colour upholstery with cartoon image.
- ♦ Under hanging instrument trolley with pneumatic locking system.
- ♦ Two airtor points, one micro-motor point, one 3 way syringe point.
- ♦ Stainless steel tray & LED x-ray film viewer.
- ♦ Halogen light Switch operated with two step intensity control.
- ♦ Ceramic cuspidor with smooth & easy to cleaning.
- ♦ Low & High vacuum pneumatic suction with flow control valve.
- ♦ Multi-function foot control.
- ♦ Doctor stool with push back system.

OPTIONAL Attachment :

- ♦ Ultrasonic Scaler LED/Non-LED inbuilt.
- ♦ Micro motor 35000RPM inbuilt.
- ♦ LED light with multi-intensity control with horizontal & Vertical movement.
- ♦ OPG LED film Viewer.
- ♦ TFT Monitor arm.
- ♦ High Power vacuum motorized suction 0.25hp inbuilt.

UV CABINET



GLASS BEAD STERILIZER



FEATURES :

- ♦ The cabinet is fabricated in rust-proof, heavy gauge ms sheet with fine epoxy powder coated finish
- ♦ Magnetic gasket seals the chamber and door switch interlocks immediately cut out the uv source when the door is opened, preventing accidental UV exposure
- ♦ Available in 12 trays
- ♦ Effective tool for avoiding contamination of instrument use sterilized or autoclave.
- ♦ Can maintain & preserve instrument for day without any fear of contamination.

ULTRASONIC-CLEANER



SPECIFICATION

- ♦ Ultra sonic cleaner (as per image)
- ♦ Ultrasonic Frequency 42000Hz
- ♦ Stainless Steel SUS304 Tank Material
- ♦ 2.5 Itr Tank Capacity
- ♦ Digital Timer with 5 Cycles LED display
- ♦ Power Supply AC 220-240V 50/60Hz
- ♦ Ultrasonic Power 70W
- ♦ Heating Power 100W



Manual

Drum

Digital

FEATURES :

- ♦ All aluminium deep drawn seamless construction
- ♦ Light compact portable easy to use top loading autoclave
- ♦ The autoclave offers fast and silent sterilization cycle at 1200c
- ♦ The sterilization cycle is microchip controlled with time adjustment facility.
- ♦ It consumes less power and reduce electricity bills
- ♦ Equipped with double over pressure protection system
- ♦ Extended life lid gasket and heating element
- ♦ Color-coded pressure gauge show internal chamber condition during the cycle

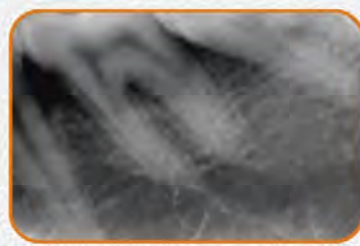
SPECIFICATION

- ♦ Chamber Diameter
- ♦ Total Height with Lid
- ♦ Capacity with Lid
- ♦ Sterilizing Temperature
- ♦ Operating Pressure
- ♦ Wattage
- ♦ Power Supply
- ♦ Timer
- ♦ Suitable Size

MANUAL/DIGITAL

- ♦ 225mm
- ♦ 280mm
- ♦ 10 Ltrs.
- ♦ 1210C
- ♦ 15 psi
- ♦ 1500 w
- ♦ 220 V
- ♦ 8 x 8 inch
- ♦ Sterilizing 60 Min.

PORTABLE - DC X - RAY



SPECIFICATION

Output kV	70kV, DC
Tube mA	2.3mA, Fixed
Exposure Time	0.01s - 1.0s
Focal Spot	0.4mm, IEC
Battery	22.2V Rechargeable
Leakage	<1mGy on the Surface
Cone Length (SSD)	200mm, Fixed
Weight	3kG (50%weight=Safety Shield)

> All data Contained here is subject to changes

For That Perfect X-ray

Is a hand-held and battery powered intra Oral X-RAY. It combines the superior performance of a DC x-ray with the convenience of portability. The design enables easy hand held positioning and usage producing superior images on either film or digital receptors,

ULTRASONIC - PIEZO SCALER



DTE-D3



DTE-D5



N2 Normal
 Detachable Hand piece Compatible
 with EMS hand piece and tips



N2 LED
 Detachable headpiece with
 LED light Frequency Tracking.

LED LIGHT CURING



LED - C



LED - D



LED - E

CAMERA



FEATURES :

- * New Nice design.
- * Super-wide automatically adjusting-focus lens.
- * 2.0 Mega Pixels, 1/4" Sony CCD.
- * With mirror function.
- * Holder with the automatic power off function.
- * USB 2.0 output.
- Support OS:
Win XP / Vista / Win7 / Win8 / Win10 (32 bits & 64 bits)

6 WHITE LEDs



USB 2.0



WINDOWS



BRUSHLESS MICROMOTOR

electric led handpiece system 40000rpm



CLINICAL MICROMOTOR



Technical Specification :

- ♦ 3 Working Mode : 16:1 / 1:1 / 1:5
- ♦ Input : 220V/AC, 60hz
- ♦ Out Put : 32v/DC
- ♦ Out Put Power : 50W
- ♦ Speed : 1000-40000R/min 10%

Technical Specification :

- ♦ Low heat generation suitable for long use
- ♦ Max speed : 35000rpm
- ♦ Max torque :2.4Ncm

AIR MICROMOTOR



LAB MICROMOTOR



MDI-T



AIROTOR HANDPIECE

MDI- S



STANDARD AIROTOR HANDPIECE

MDI-TU



TROUQE HANDPIECE

MDI-LQ



LED BASE AIROTOR

MDI-ST



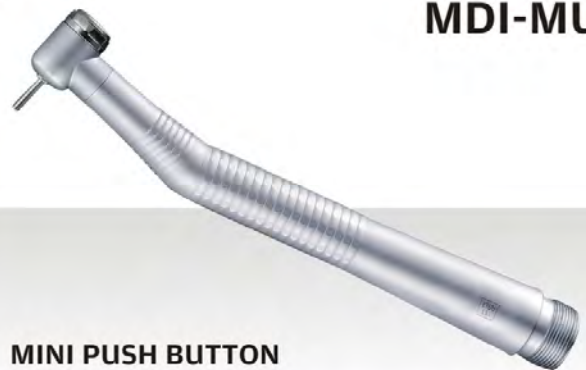
STRAIGHT HANDPIECE

MDI-CA



CONTRA HANDPIECE

MDI-MU



MINI PUSH BUTTON

- Special clean head designed to avoid entry of oral fluids
- Sterilized at 135°C in auto clamp
- Air pressure at back 0.2~0.3 Mpa (0.22 1mpa preferred)
- Super torque head (Rotation Speed >=300000rpm)
- can be connected to any standard air rotor coupling.
- Triple water spray
- push button bur change system
- Super torque head
- Standard head with ceramic ball bearing & Clean head System
- Super torque head with push button
- Super torque with push button LED Optic

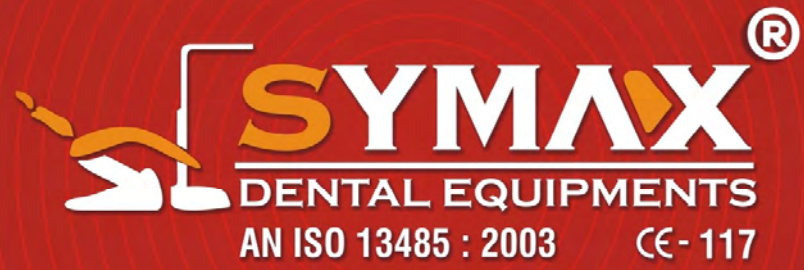


Safety Features :

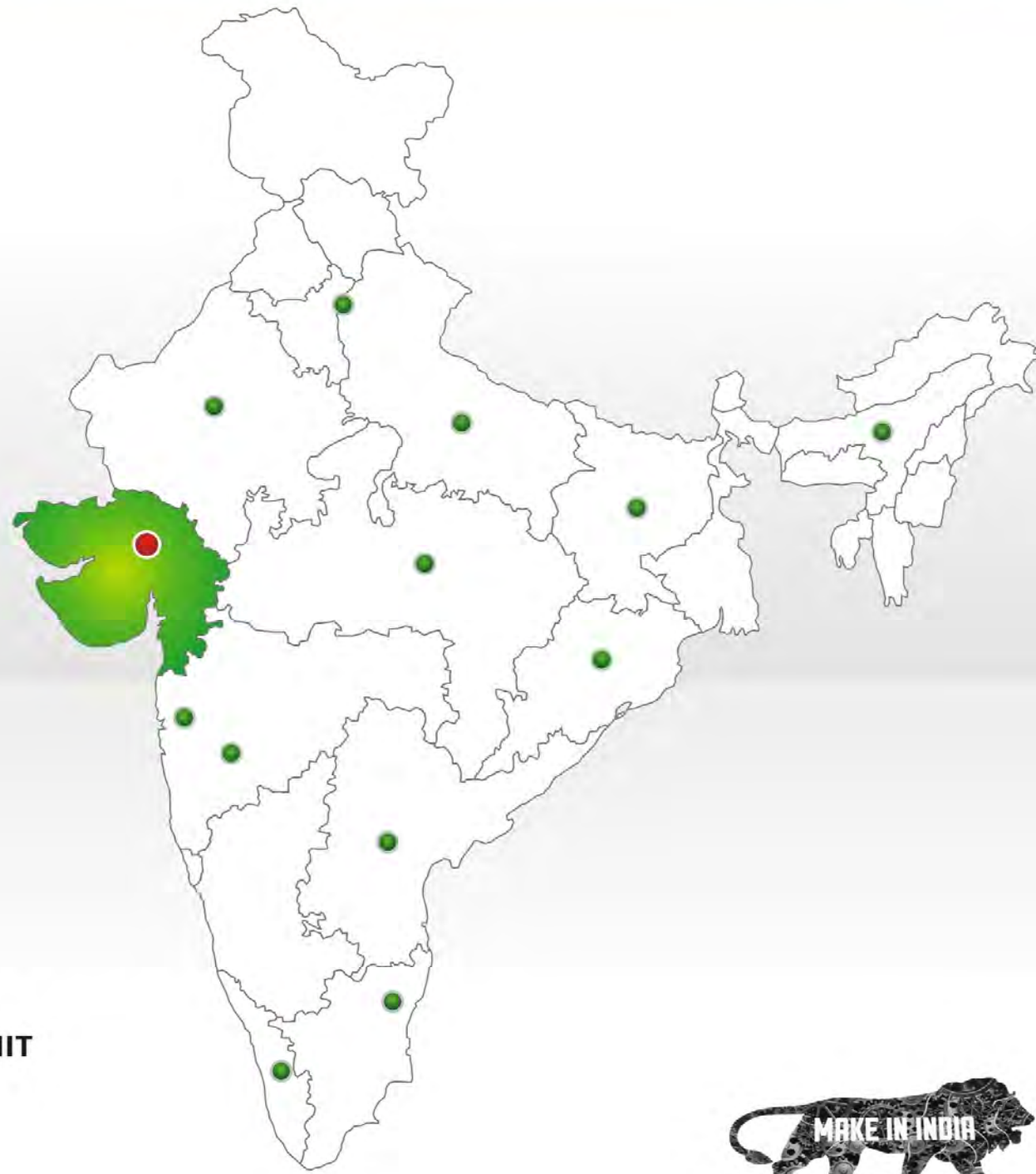
- ♦ Powered with MCB (Minature Circuit Breaker) - for overload electricity protection
- ♦ Thermostat Safety : For over temperature protection
- ♦ Automatic water inlet
- ♦ Error messaging System

Technical Specification :

- ♦ Table top front loading Autoclave 18 Liters "N Class".
- ♦ Fully Automatic Micro-Processor based Control.
- ♦ Feather touch controls with digital display
- ♦ Highly accurate Semiconductor pressure sensor for with 4 programs 1.2kg. (121°C) or 2kg (134°C), both temperature with wrap and unwrap mode
- ♦ Sterilisation Chamber made up of thick stainless steel sheet, tested with high pressure.
- ♦ Digital Timer both for wet and dry heat : Wet Timer starts after desired temperature is reached irrespective of load of instruments in Chamber. Dry Timer starts automatically after wet cycle is over, resulting in perfect sterilization.
- ♦ Silicone Rubber ring-gasket in the door, silicon tube for Drain water.
- ♦ Screw Handle for door locking prevents sudden opening of door.
- ♦ Auto drain of water and also condensation of steam.
- ♦ Alarm after total command is over.
- ♦ Auto equalizer of pressure in Chamber for easy opening.
- ♦ Finished with heat cured Epoxy powder coating paint.
- ♦ Base and Front Panel made of stainless steel.
- ♦ Highly Accurate Pressure Sensor is used.
- ♦ Tone Buzzer to produce different tones during operation. (viz., Key press, -Temperature reached, Job over etc.)
- ♦ Wet Heater to a maximum of 1.0kW.
- ♦ Dry Heater to a maximum of 300W.
- ♦ Thermostat for sensing no water in the sterilization chamber.
- ♦ Programmed parameters are stored in Flash memory, eliminating the need to set the parameters again after Power Off.



www.symaxdental.in



- | CORPORATE OFFICE & PRODUCTION UNIT
- | OUR DEALER NETWORK





Continue effort not strength or
Intelligence is the key to unlocking our potential

Authorised Dealers:



Lets Have a Cup of Together



SYMAX DENTAL EQUIPMENTS

Sade No. : 8, VERAI ESTATE, Opp. Ceramic Casa, Gota - Chandlodia Road, Gota, Ahmedabad - 382481. (Gujarat) INDIA.

📞 : +91 98 2561 2550 📞 : +91 79 6513 2550 ✉ : symaxdental@hotmail.com 🌐 : www.symaxdental.in

SALES : +91 90990 42505 CUSTOMER CARE : +91 90990 42503 SERVICE : +91 90990 42508